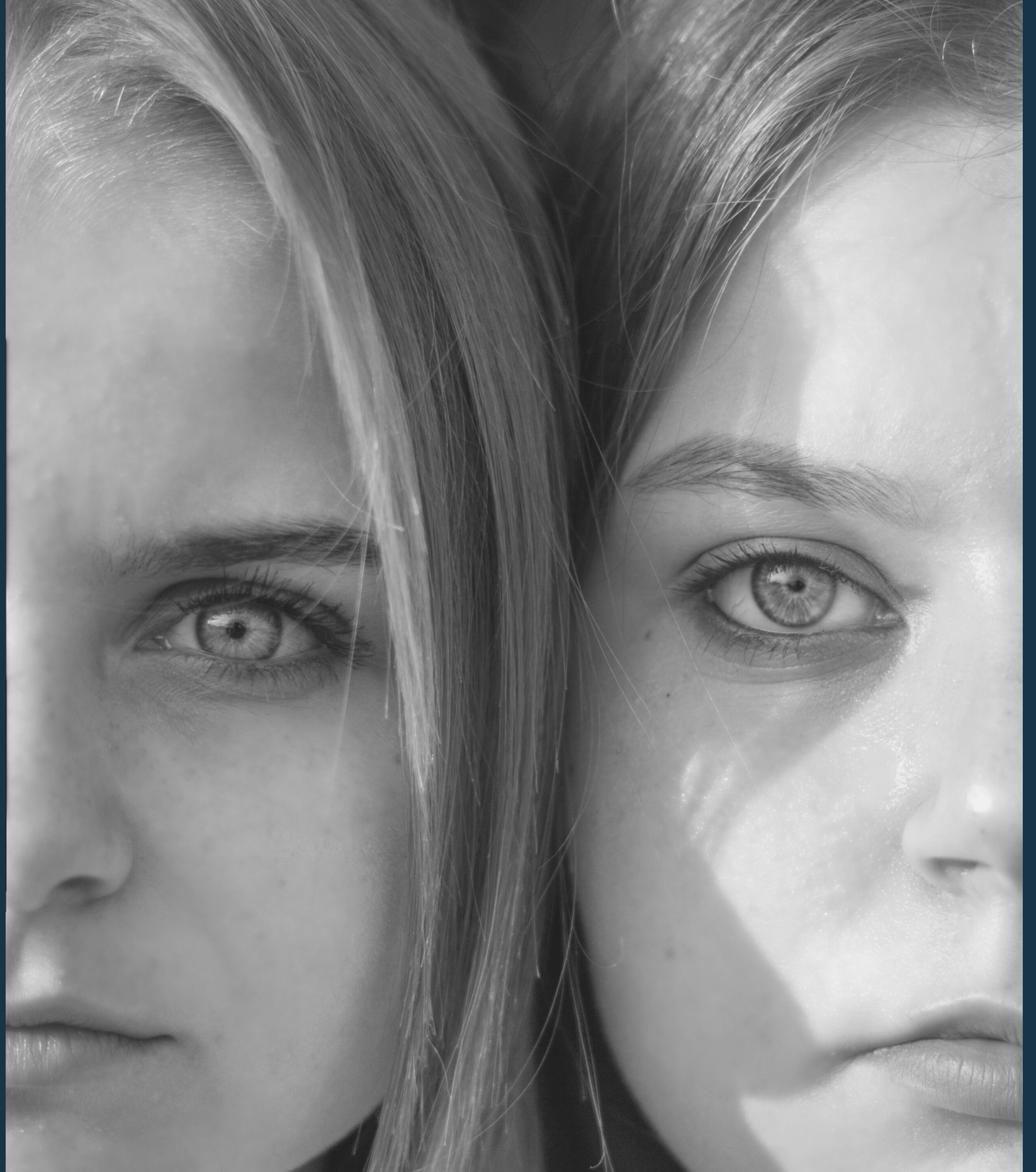




**YOU'RE NOT
ALONE**

HELP IS AVAILABLE



CRISIS LINE

**Call 877-519-9322
Available 24/7**

**Compassionate. Safe.
Non-Judgmental.**

Crisis Services are provided by
Adapt Integrated Health Care as
a community service to all
Curry County residents.

ADAPTORÉGON.ORG ✦ 24/7 CRISIS LINE 877-519-9322