





MISSION *To provide our communities access to world class primary care, addictions treatment, behavioral health care and prevention services to promote health and restore lives.*

APPROACH *We integrate science, compassionate care and innovation to promote the health and well-being of the individuals, families and communities we serve.*

VALUES

Caring
We act with care and compassion to support our customers, our communities and each other.

Accessibility
Our programs and services are person-focused, accessible, culturally relevant and trauma-informed.

Excellence
Our promise and commitment is to clinical excellence and world class customer care.

Respect
Our organization is built on deep respect for the individuals, families and communities we serve.

Innovation
We leverage the knowledge of science and the wisdom of experience to inspire hope, health and recovery.

Integrity
Our organization is built on a foundation of honesty, trust, ethical conduct and accountability.

Professionalism
Our employees are valued professionals who commit their time and talents to our mission.

CONTENTS

A Mission of Service4
Our Commitment to World-Class Care

Sustaining Our Mission5
Bringing Our Greatest Strengths to Bear in Service to Our Community

Our Impact6
Opening Doors to Health & Recovery Since 1971

Serving Southern Oregon7
Growing in Response to Community Need

Our Integrated Services8
Substance Use Treatment & Recovery 8
Community Mental Health Care 10
Patient-Centered Primary Care 12

Health & Recovery in the Community14
Reducing Barriers & Securing Brighter Futures

Service Excellence16
Leading with a Commitment to Equity, Diversity & Inclusion

Comprehensive Care18
Affordable, Accessible, & High Quality Care for All



We are proud to be recognized for our commitment to excellence.

A MISSION OF SERVICE

Our Commitment to World-Class Care



Gregory S. Brigham, Ph.D., CEO

For many of us, 2021 will be remembered through the lens of challenge and loss. We remember and mourn the loss of Susan Jeremiah and Gary Wayman—two individuals who dedicated their time and talents in service to our mission and to our community. The year will also be remembered as one of remarkable resilience and perseverance in the face of challenge and uncertainty created by the COVID-19 pandemic.

As a patient-centered organization, our north star is an unwavering commitment to world-class care provided by skilled and caring employees. Over the past year, we have worked hard to respond to the needs of our community by helping people to navigate service delivery in a COVID-19 environment, expanding telehealth services, and offering “open access” same day scheduling to meet patients’ needs. Despite the challenges, we have stayed on course and have grown as an organization and as one of the best nonprofits to work for in Oregon.

It is with sincere gratitude that we share with you our 2021 Annual Report to the Community. As we look to the future, we want to say thank you to our skilled and dedicated workforce, our esteemed Board of Directors, and you—our community—for your commitment to the cause of health and recovery for the thousands of men, women and children who turn to us for help each year.



Todd C. Munsey, Board Chair

For several years I have observed this organization’s response to community need by providing extraordinary care during some of the most challenging times—and 2021 has been no different. The Adapt Board of Directors has been inspired by Adapt’s talented management and clinical staff and honored to offer guidance and support to help them meet the needs of the communities we serve.

During the past year, Adapt attained full integration of primary care, mental health care and substance use treatment—creating a no-wrong-door approach to patient care, achieved national recognition as a Primary Care Health Quality Leader, opened a Sobering Center, and expanded Douglas County’s mobile crisis services. And, beginning in 2022, Adapt will serve as the Community Mental Health Program for Curry County.

This annual report is a testament to the incredible work being done in service to the people and communities of southern Oregon. On behalf of the Adapt Board of Directors, thank you for your continued support of our mission to restore health and lives. Together we are making a difference.

Executive Team

- Gregory S. Brigham, Ph.D.
Chief Executive Officer
- Theresa Lundy, M.D. Chief Medical Officer
Primary Care & Addiction Services
- Brian Yates, M.D., Medical Director
Psychiatric Services
- Steven Blum, M.D., Medical Director
Opioid Treatment Services
- Thomas Sorrells, LCSW
Clinical Director of Addiction Services
- Cherie Barnstable, LCSW
Clinical Director of Mental Health Services
- Lisa Hubbard, LCSW
Director of Training & Staff Development
- Stephanie Green
Chief Human Resources Officer
- Grayson Bly, CPA
Chief Financial Officer
- Janet Tribble
Financial Advisor
- Michelle Watson
Chief Operations Officer—Primary Care
- Jerry O’Sullivan
Chief of Regional Business Operations
- Matthew Corrington
Chief Information Officer

Board of Directors

- Todd C. Munsey, *Chair*
- Kelsey Wood, *Vice Chair*
- Dan Wilson, *Secretary/Treasurer*
- Neal Brown
- Sharon Harrison
- Judy Martin
- Scott Rutter
- Jason Harman
- Matthew Brady

Remembering With Gratitude

- Susan Jeremiah
Chief Human Resources Officer
- Gary Wayman
Board of Directors

SUSTAINING OUR MISSION

Bringing Our Greatest Strengths to Bear in Service to Our Community

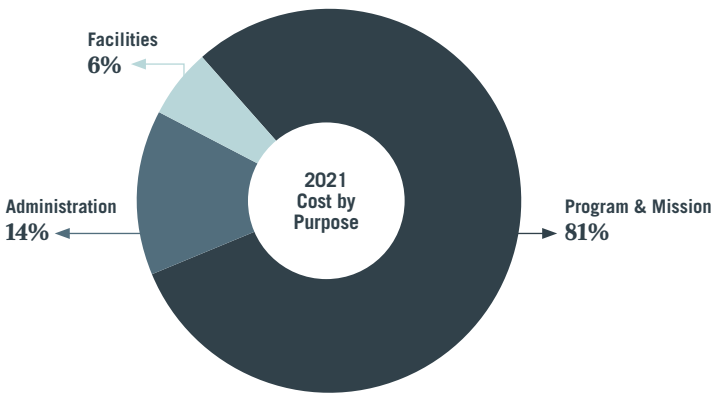
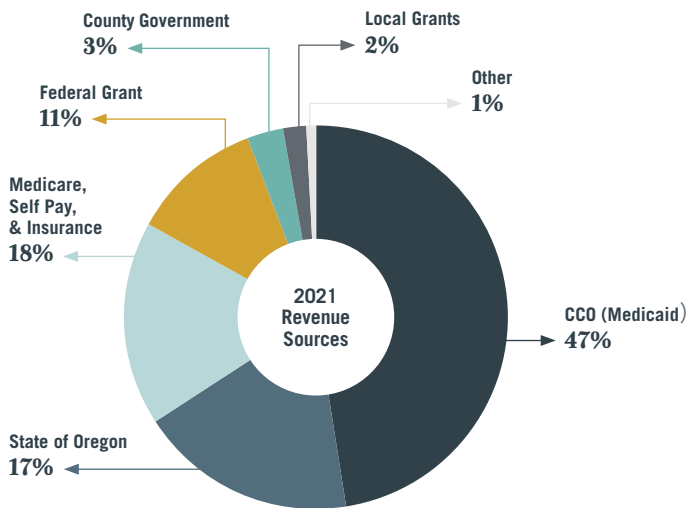
During a time of great uncertainty, we have continued to hold steadfast to our mission to provide the highest quality primary care and behavioral health care to the people and communities of southern Oregon. The ongoing pandemic has had a profound impact on the way we do business, but we have brought our greatest strengths to bear to protect the capacity of our workforce and the integrity of our programs and services. We are deeply grateful to our local, state and national partners and individual donors who have helped to build a strong system of integrated care that is making a difference in people’s lives today and for generations to come.

Major Funders

- Umpqua Health Alliance CCO
- Advanced Health CCO
- AllCare CCO
- Oregon Health Authority
- U.S. Health Resources & Services Administration (HRSA)
- Substance Abuse & Mental Health Services Administration (SAMHSA)
- U.S. Health & Human Services
- Douglas County
- Coos County
- Josephine County

Donors & Foundations

- The Ford Family Foundation
- New York University School of Medicine
- Oregon Health & Science University
- Cambia Health Solutions
- Optimum Environmental Corporation



“There may be no other more difficult and debilitating set of human conditions than the combination of substance use disorder with physical and mental health disease. Your generous support has helped Adapt to build a fully integrated system of primary care, mental health care and substance abuse treatment that is bringing hope, health and recovery within reach of those who need it most.”

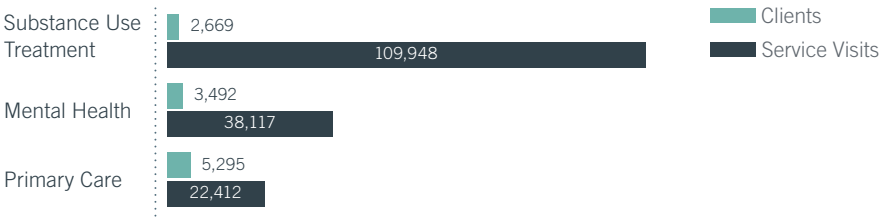
Kelsey Wood
Vice Chair, Adapt Board of Directors

OUR IMPACT

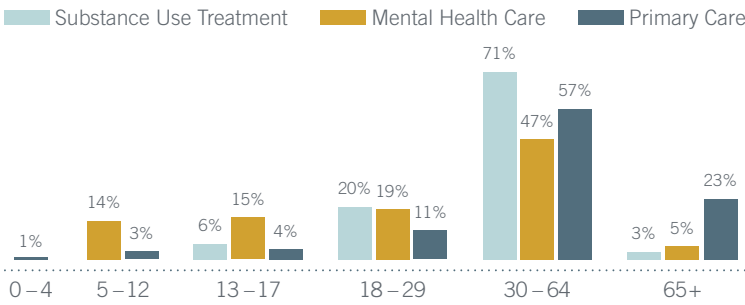
Opening Doors to Health & Recovery Since 1971

The healthcare needs of our community are complex and ever-changing. To help meet the needs of our patients and community, we have taken steps to open doors to health and recovery by integrating care—primary care, mental health care, and substance use treatment. Integration of care means our patients have greater access to a multidisciplinary network of care to address their unique health needs and goals, regardless of ability to pay.

Clients & Services by Service Area



Care for All Ages



2021 Highlights

Pandemic Response

- Built and sustained full employment of essential workers during ongoing COVID-19 pandemic.
- Kept our doors open to new and existing patients and successfully delivered in-person and telehealth primary care, mental health and substance use treatment services to our clients and community.
- Stood up vaccination clinics for essential workers, patients and others at risk of exposure and serious outcomes of COVID-19.
- Sustained access to medication for opioid use disorder by delivering medication to isolated client homes and employing the federal take-home medication exception.

Service Delivery

- Named Community Mental Health Program for Curry County—welcoming new patients and a skilled professional team beginning January 1, 2022.
- Launched fully integrated Electronic Health Record and team approach to primary care and behavior health care—connecting patients to the providers and care they need.

- Sobering Center opened to provide a safe and supportive placement for publicly intoxicated individuals to become sober and connect with treatment.
- Same day open-access scheduling for primary care and behavioral health appointments is reducing patient wait times and improving access to care.
- Provided staff support, resources and emergency shelter in solution-focused response to homelessness.

Regional Recovery Campus On the Horizon

- In response to growing community need, we have begun work toward the development of a regional recovery campus designed to serve the unique substance use and mental health needs of adults, adolescents and families from throughout our southern Oregon region. The campus will include sub-acute medical detox services, residential care, wellness services, peer support, and recovery housing—in one location to support a person's whole health needs. The campus will be developed in phases, beginning in 2022 with construction of a much needed sub-acute Medical Detoxification & Stabilization facility.

11,456

Total People Served All Service Areas

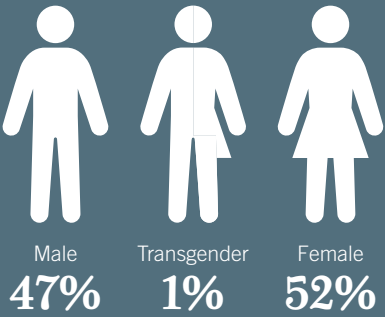
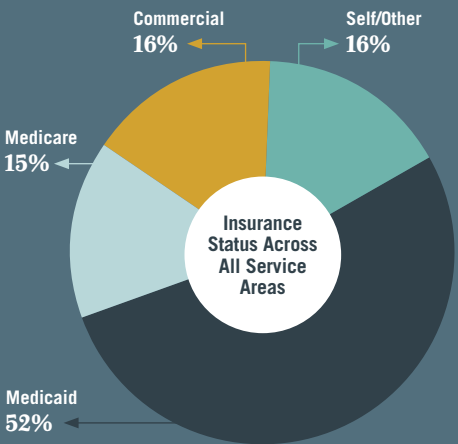
Unduplicated client count, 10,008

170,477

Total Service Visits

16%

Unhoused Clients



Some graphs in this report may not equal 100% due to rounding.

SERVING SOUTHERN OREGON

Growing in Response to Community Need

Adapt Integrated Health Care has pursued a course of growth and innovation to provide the most comprehensive and cost-effective care for our growing patient population. Although our organization has grown over the years in response to community need, what remains constant is our mission to improve the health and lives of the individuals, families and communities we serve.

Douglas County

Substance Use Treatment Reedsport
Mental Health Care Reedsport

Coos County

Substance Use Treatment North Bend
Opioid Treatment Program North Bend
Fresh Start Day Treatment & Supportive Housing North Bend

Curry County

Community Mental Health Port Orford
Community Mental Health Gold Beach
Hammond House Supportive Housing Gold Beach
Community Mental Health Brookings

Adapt provides regional substance use treatment services to Curry County.

Regional

Adult Detox & Residential Care
Youth Residential Care
Sobering Center

Douglas County

Substance Use Treatment Roseburg
Primary Care Clinic Roseburg
Mental Health Care Roseburg
Opioid Treatment Program Roseburg

Primary Care Clinic Winston
Hillside Terrace Transitional Housing Winston

Josephine County

Substance Use Treatment Grants Pass
Eveningside Supportive Housing Grants Pass

“My life now is even better than before my addiction took over. I feel like I have Adapt to thank for that, as I could not have done so well on my own or without the continued encouragement, support and advocacy that I have received here.”

2,669

Total Adult & Youth
Patients Served

109,948

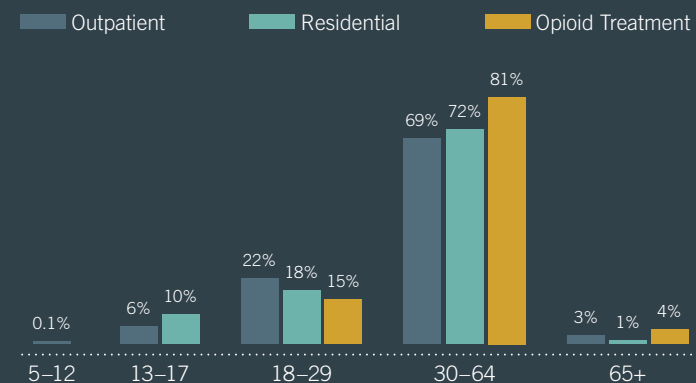
Total Service Visits

SUBSTANCE USE TREATMENT & RECOVERY

Opening Doors to Health & Renewal

Living in recovery is a life-long process that begins with knowing where to seek care that is safe, supportive, and effective. For over 50 years, Adapt has been that place for thousands of young people and adults. Although the ongoing pandemic has posed additional risks that can lead to increased use or a return to substance use for people in recovery, we have worked hard to keep our doors open to help people rebuild and celebrate their lives in recovery.

Care for All Ages



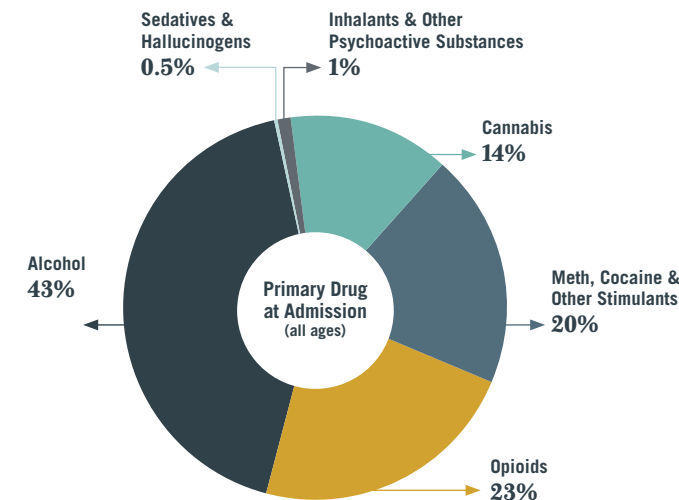
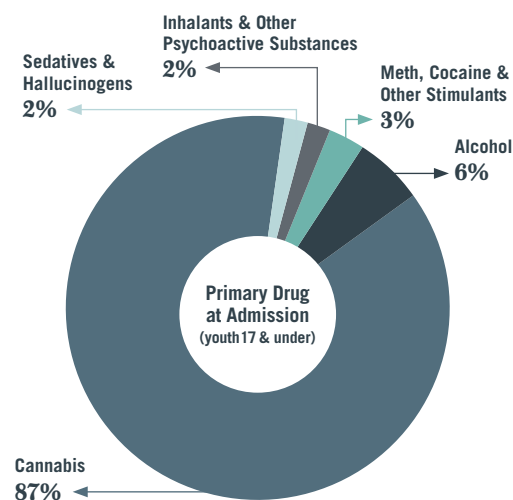
“Treatment is not one size fits all. Adapt is committed to meeting people where they are to provide personalized care.”

Clients & Services by Regional Service Location

| | CLIENTS | SERVICES |
|------------------|---------|----------|
| Coos County | 729 | 32,438 |
| Douglas County | 1,707 | 67,926 |
| Josephine County | 413 | 9,584 |

Opioid Treatment Patients & Services by Service Location

| | PATIENTS | SERVICE VISITS |
|----------------|----------|----------------|
| Coos County | 219 | 20,995 |
| Douglas County | 345 | 34,184 |



Detoxification

A Vital Step Toward Successful Recovery

Most people in treatment for alcohol or other drug addiction do not immediately feel better after stopping their substance use—the symptoms of withdrawal can be painfully severe and potentially life-threatening. Sometimes a safe and supportive detoxification experience is the first step on the road to recovery. Prior to the opening of Adapt Detox in 2016, residents at risk of dangerous withdrawal symptoms had to travel long distances or rely on the emergency room for care.

Today, Adapt’s state-licensed residential detoxification center offers medically-monitored and clinically-managed detoxification (also called social detoxification) levels of care to safely stabilize clients during the acute withdrawal phase of recovery. With successful detoxification, our skilled clinical team works with patients and their primary care provider to ensure the successful transition to outpatient or residential substance use treatment to support their ongoing recovery. In 2021, 369 men and women in our southern Oregon region received medically monitored detox services and 25 adults received social detox services.

369

Adults Received Medically
Monitored Detox

COMMUNITY MENTAL HEALTH

Ensuring Access to Care for All Ages

At no time has access to mental health care been more important than it has been over the past two years. Despite the challenges brought by the ongoing pandemic, we have remained committed to increasing access to high-quality mental health care for our community. Over the past year, we have worked hard to respond to the needs of our community by helping people to navigate service delivery in a COVID-19 environment, expanding telehealth services to protect the health of our clients and providers, and offering “open access” same day scheduling to bring mental health care within reach of more people when they need it most. Through hard work, innovation and a shared commitment to keeping our communities healthy, we provided mental health care to more people in 2021 than in the past year.

“Adapt has absolutely helped me to change my life.... I am grateful to be here.”

Welcome to Curry Community Mental Health Program A Shared Mission to Promote Health & Restore Lives

Community Mental Health Programs in counties throughout Oregon are responsible for providing a system of appropriate, accessible, and effective safety net services to meet the mental health needs of community members. In 2021, Adapt was selected by the Curry County Commissioners and Oregon Health Authority to serve as the Community Mental Health Program for Curry County effective January 1, 2022.

We are honored to have the opportunity to welcome many skilled professionals and administrative support staff to serve hundreds of community members who receive mental health services in Curry County each year. Our new offices in Brookings, Gold Beach, and Port Orford will make mental health services more accessible to Curry County residents, including mental health and substance use treatment services for children, adults and families, 24/7 crisis services, and many other community mental health programs to help our clients to be successful in their treatment and community. Additional staffing and services will come online over the coming months.

Adapt has served as the Community Mental Health Program for Douglas County since 2016, and we are honored to serve in this capacity for Curry County. We look forward to working with the many community members and organizations that support our mission to promote health and restore lives.

3,126

Total Adult & Youth
Clients Served
33,450 Service Visits

1,241

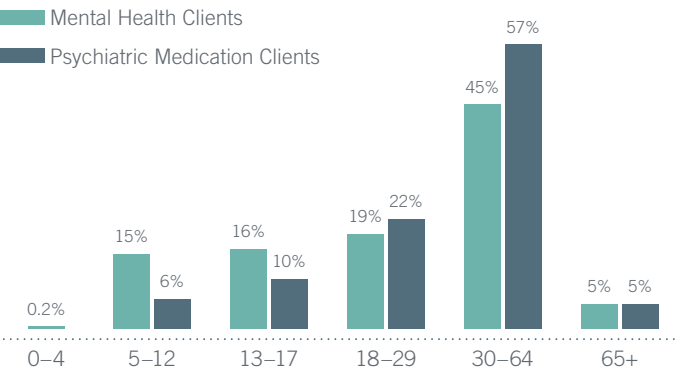
Psychiatric Medical
Clients Served

4,667 Service Visits

Reaching Children Where They Are In-Home & In-School Mental Health Services

The pandemic has presented enormous challenges to providing school-based mental health services. School closures, social distancing and behavioral health workforce shortages have reduced the classroom line of sight that is critical to identifying children and adolescents with mental health needs. Over the past two years, we maintained open access to care by delivering counseling services in students’ homes, community settings, and through expanded telehealth to make it possible for students and their families to remain engaged in treatment. Although we were not able to place a therapist in every school, our skilled youth and family therapists provided counseling to 305 students from 22 schools and 1 school-based health center across 9 school districts. For children with complex behavioral health symptoms, we provided Intensive In-Home Behavioral Health Treatment—18 local children who might otherwise have been referred to residential treatment or in-hospital care. Restoring in-school capacity is a top priority for Adapt in 2022.

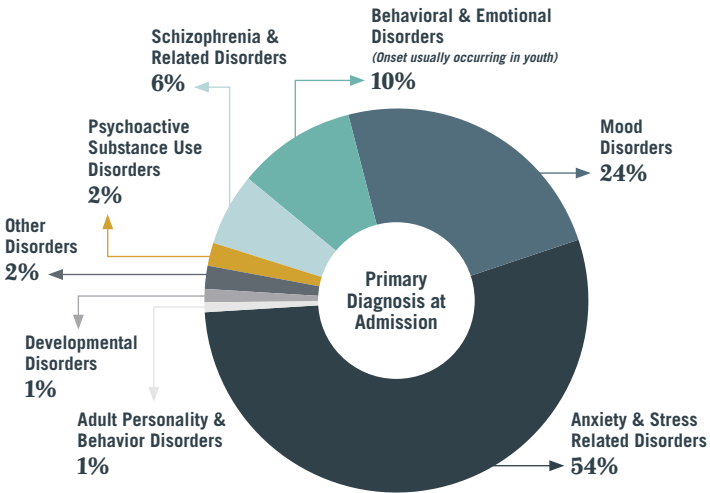
Care for All Ages



24/7/365 Crisis Response Solution-Focused and Recovery-Oriented

Over the past year, our Mental Health Crisis Team in Douglas County has continued to provide critical help to individuals and families experiencing mental or emotional health crises. In-person and telephone crisis services prioritize public safety and the unique circumstances of the individual. Our Mobile Crisis Response Team works in partnership with local law enforcement on calls involving a mental health crisis, including calls involving suicide threats, public disturbances, grief and loss, family disputes, and potentially volatile police situations.

A total of 784 adults (86%) and youth (14%) received crisis services in 2021, including mobile crisis services delivered in-person to 370 individuals and via telehealth to 53 individuals. In addition, as part of a local IMPACTS initiative led by the Umpqua Health Alliance, our skilled intensive care coordinators provided support to 266 individuals to reduce barriers to care and to avoid unnecessary costs associated with frequent hospital and emergency department utilization.



305

Students Received
In-Home & In-School
Treatment Services

784

Adults & Youth Received
Mental Health Crisis Services

2,559

Calls to 24 Hour
Crisis Line

2% Increase Over the Prior Year

PATIENT-CENTERED PRIMARY CARE

Value Added to Patients & Community

Community Health Centers in Oregon and throughout the U.S. provide incredible value to the communities they serve and have filled an important role in the local response to the coronavirus pandemic. Faced with unparalleled challenges on our healthcare providers and organization, we are inspired by the unyielding dedication of our clinical and administrative staff who have continued to provide the highest quality care to our patients—helping patients navigate their healthcare under rigorous health and safety protocols, expanding and supporting patients in the use of telehealth technologies, and offering same day scheduling to connect patients with the services they need when they need them most.

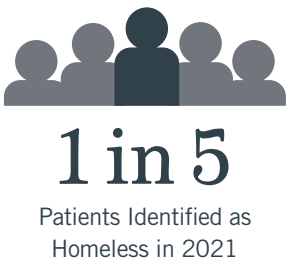
Over the past year, Adapt's patient-centered primary care clinics provided 6,966 adults, adolescents and children with 42,770 primary care and behavioral health service visits—both in-person and telehealth. We are gratified to know that our work is contributing to the health of our community and to our local economy in jobs, lower healthcare costs, and increased access to high quality care for our community, regardless of ability to pay. It is estimated that Adapt's community health center has realized a total impact of over \$65 Million in community economic benefit and a savings of \$7 million to Medicaid.

Restoring Health & Lives Medication for Opioid Use Disorder

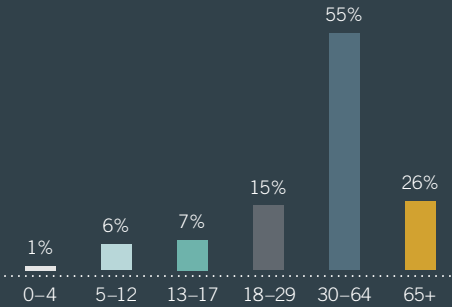
Medication-Assisted Treatment, or MAT, is an evidence-based therapy for people with Opioid Use Disorder. MAT offered in our primary care clinics uses medications in combination with behavioral therapy to empower people to manage their symptoms so they can focus on their treatment and rebuild their lives. We have built a team of providers with extensive training to provide medication-assisted treatment in combination with behavioral therapies to increase long-term recovery rates for people with Opioid Use Disorder. In 2021, 277 patients received life-saving medication-assisted treatment, a 9.5% increase over the prior year.

Integration Reducing Barriers to Care Identifying & Responding to Patient Needs

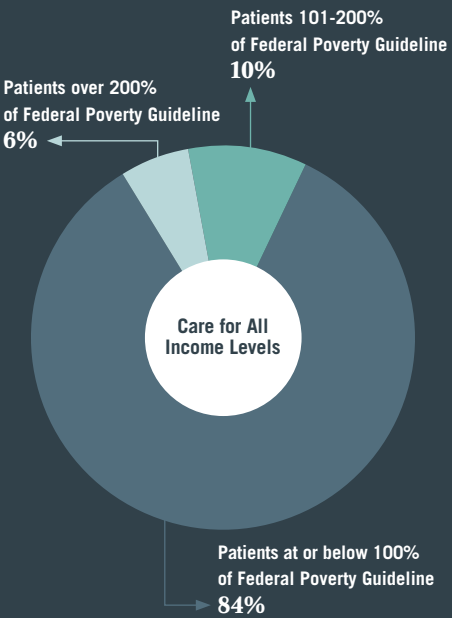
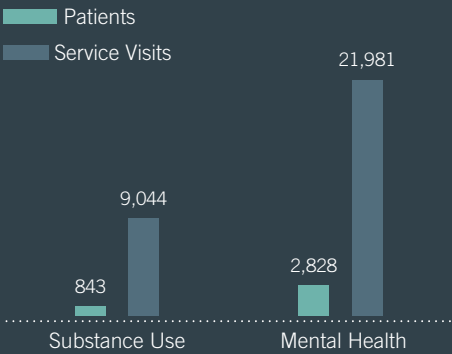
The integration of primary care and behavioral health care is helping our patients access the care they need when they need it. One of the cornerstones of integrated care is enhanced patient screening to identify health conditions or circumstances that may pose a barrier to health. Universal screening for social determinants of health allows providers to identify and address unmet patient needs that might otherwise go undiscovered, including mental health and substance use disorders, homelessness, food insecurity, intimate partner violence and other physical or emotional trauma. Our primary care and behavioral health providers work as a team and in close coordination with co-located case managers, patient advocates and others to recognize and respond to our patients' unique health care needs and goals.



Care for All Ages



Care for Patients with Substance Use & Mental Health Disorders



6,966

Primary Care & Behavioral
Health Patients Served



42,770

Primary Care & Behavioral
Health Service Visits



\$65 million*

Total Community Economic
Impact & Benefit



\$7
million*

Savings to Medicaid

* Based on 2020 health center audited financial statements and Uniform Data System reports (Capital Link)



Peace at Home
ADVOCACY CENTER

“We are so fortunate to have a patient advocate from Peace at Home who is co-located in our clinics.”

Patient Care & Outcomes Delivering on Our Promise of Clinical Quality

As a federally qualified health center, we are evaluated by the Health Resources and Services Administration on a set of national performance measures emphasizing health outcomes. The measures provide a comprehensive look at gains made to improve the health of our patients and community. Although the ongoing pandemic has had a profound impact on the delivery of patient care, we have continued to earn the highest national health center awards for overall clinical quality, patient access to care, reducing health disparities, and use of technology to improve patient care. In 2021, we met or exceeded targets on many important quality of care measures, including screening for tobacco use, colorectal cancer screening, and healthy weight measures for adults, adolescents and children. As we look to the future, we look forward to new opportunities to help patients of all ages and abilities achieve their health and wellness goals.

| Selected Quality of Care Measures | 2021 Service Target | 2021 Measures |
|--|---------------------|---------------|
| Screening for Clinical Depression and Follow-Up Plan | 80% | 77% |
| Hypertension: Controlling Blood Pressure | 65% | 60% |
| Diabetes: Hemoglobin A1c Poor Control <i>(lower is better)</i> | 25% | 30% |
| Cervical Cancer Screening | 55% | 48% |
| Colorectal Cancer Screening | 55% | 60% |
| Body Mass Index Screening and Follow-Up for Adults | 60% | 64% |
| Weight Assessment and Counseling for Children & Adolescents | 70% | 70% |
| Tobacco Use Screening | 90% | 90% |



HEALTH & RECOVERY IN THE COMMUNITY

Reducing Barriers & Securing Brighter Futures

We know that life-long health and recovery take place in communities, and it is in communities throughout our region that we can see the rewards of working with our many community partners to secure a brighter future for individuals and families in need. Through innovative programs and partnerships we are reducing barriers to care and creating opportunities for people to build a future with health, home, purpose and community.

Recovery Housing

Reducing Barriers to a Life in Recovery

Unstable housing can make it difficult to initiate and sustain treatment and recovery for substance use disorders. Financial difficulties, health concerns, and being a parent with young children often amplify the challenges individuals and families face.

Recovery housing is an effective solution to some of the toughest problems people face when rebuilding a life in recovery. Recovery housing not only keeps people engaged in their treatment, but provides a safe, drug-free environment that reduces the risk of relapse. Adapt's recovery housing is more than housing, it is a life-line to treatment, peer support, health care, employment, education and a full life in recovery. And, for families involved in the child welfare system, recovery housing provides a safe and secure environment that allows families with young children to focus on their recovery rather than worrying about where they will spend the night.

Adapt operates three recovery housing sites with a total of 28 units: Hillside Terrace (Douglas County), Eveningside (Josephine County) and Fresh Start (Coos County). In addition, we now operate Hammond House (Curry County) with 4 units to support persons who are unhoused and in treatment for a mental health condition. Each location is unique, but each is dedicated to helping individuals live more stable and productive lives. The average length of stay in recovery housing is 8 months—with an estimated 60% of residents successfully transitioning to permanent housing and 48% securing gainful employment.

24

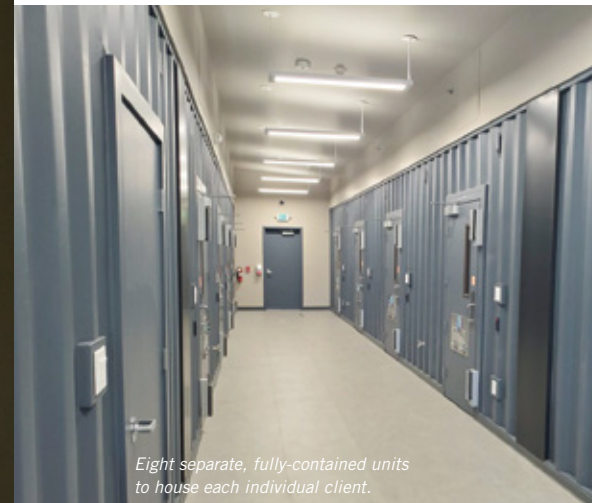
Families with Children
in Recovery Housing

60%

Transition to
Permanent Housing

32

Individuals in
Recovery Housing



Eight separate, fully-contained units
to house each individual client.



Sobering Center opened in August 2021

Sobering Center

An Innovative, Cost-Effective & Caring Solution

The Sobering Center was opened in Douglas County in August 2021 to offer an alternative to jail or the emergency department for publicly intoxicated individuals. Rather than remaining on the streets, publicly intoxicated individuals are removed from an unsafe situation in the community and brought by law enforcement to a safe, secure and supervised environment. Sobering center staff meet people where they are and provide services that are trauma informed and nonjudgmental. In just five months of operation, the Sobering Center provided 75 service visits to 55 individuals, and 53% of admissions were unhoused individuals. All who receive sobering center services are provided information and referrals to community resources and, when appropriate, offered a warm hand-off to treatment and recovery services.

Sobering Center Partners

- Douglas County
- Umpqua Health Alliance
- Oregon Health Authority
- Roseburg Police Department
- Winston Police Department
- Sutherlin Police Department
- Myrtle Creek Police Department
- Local Public Safety Coordinating Council
- Cow Creek Band of Umpqua Tribe of Indians

Thank you to all who have generously contributed funds and resources to provide safe stabilization to our neighbors with the most complex health and social service needs.



Reducing Barriers to a Life in Recovery

Harm reduction is an evidence-based approach to reduce the negative personal and community health impacts of substance use, including hepatitis C, HIV and other chronic conditions. In coordination with the Oregon Health Authority's Behavioral Health and Communicable Disease Programs and the HIV Alliance, Adapt's certified PRIME+ Peer Support Specialists engage with people who are at risk of or who are receiving treatment for overdose, infection or other substance use related health issues to make connections to primary care, harm reduction resources, hepatitis C testing and treatment and, when needed, substance use and mental health treatment. PRIME+ Peer Support Specialists are reducing common barriers to treatment and recovery by providing transportation assistance, Oregon Health Plan enrollment, and connections to food and housing resources. In just six months of operation in 2021, PRIME+ Peer Support Specialists provided services and support to 88 Douglas County community members to help prevent the life-threatening consequences of substance use.

55

Individuals Admitted

75

Sobering Center Visits

53%

Unhoused Individuals

“To see someone break the powerful hold of meth addiction and go through 3 months of hepatitis C treatment while living in their car, is both heart wrenching and inspiring.”

PRIME+ Peer Support Specialist

SERVICE EXCELLENCE

Leading with a Commitment to Equity, Diversity & Inclusion

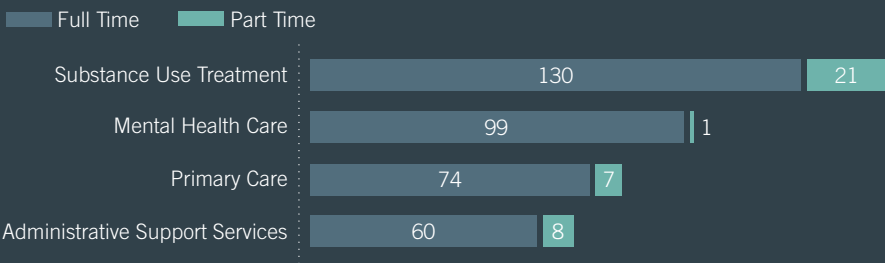
Despite the ongoing global pandemic, we have continued to affirm our commitment to diversity within our workforce to achieve our organizational mission to promote health and restore lives. Through ongoing education and employee-led initiatives, we have strengthened our understanding that diversity positively impacts our productivity, creativity, cultural awareness and reputation.

We know that our productivity increases when we welcome a broader range of skills from employees with different life experiences and perspectives. And, with different life experiences and perspectives among our employees, we open doors to greater creativity and innovation. As our cultural awareness increases, we develop a more nuanced approach to serving one another and those who turn to us for care. As an Oregon leader in primary care, behavioral health care and prevention, our reputation for providing world-class care has grown stronger with a focus on diversity, equity and inclusion.

Employees Making a Difference Full Time & Part Time Employees

We are inspired by our many dedicated employees who are finding purpose in their work lives and making a meaningful difference in the communities where they live and work. Over the past year, and despite the ongoing pandemic, we built and sustained full employment of 400 employees from throughout our four-county region.

Full Time & Part Time Employees

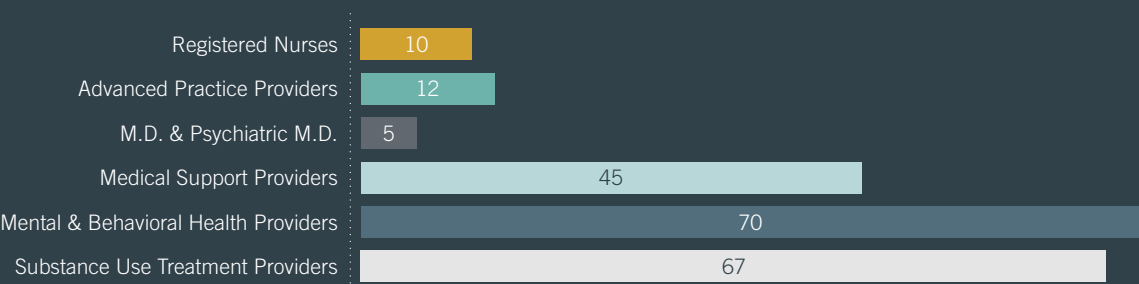


Clinical Excellence

Licensed & Certified Providers

Patient-centered care is about providing the best possible health care to meet each individual's specific health care needs, regardless of one's ability to pay. Our skilled primary care and behavioral health providers work as a team to provide our patients with the highest-quality care. In 2021, 209 licensed and certified medical and behavioral health providers cared for thousands of men, women, adolescents and children across our four-county region.

Licensed & Credentialed Providers

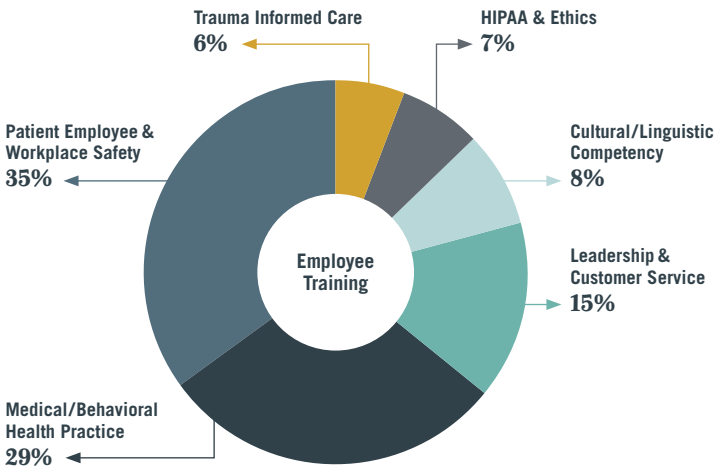


“Whether we are sweeping floors, providing care for our clients, processing paperwork or carrying out a variety of other essential tasks, we are contributing to a mission of service to the people and communities we serve. Regardless of what we do, our focus on excellence has a positive impact on our community.”

Stephanie Green
Chief Human Resources Officer

Continuous Learning & Improvement Investment in Employee Education

With a rapidly changing health care environment, employee education has never been more important. Over the past year, Adapt offered over 70 in-person and remote educational opportunities to support employee professional development and credentialing, as well as to sustain organizational excellence in cultural competency, trauma informed care, quality improvement, and safety.



Qualified & Professional Workforce Trusted & High Quality Care

Improving access to care depends on ensuring the delivery of services by highly qualified primary care and behavioral health professionals. Adherence to rigorous credentialing standards for our providers has earned Adapt the trust of our patients and community. In 2021, 58 primary care, mental health care, and substance use treatment providers throughout our region were newly credentialed or recertified to provide patient care.



Counselor Shawna & Lead Peer Mentor Camille with Adapt Grants Pass.

“We care deeply that our clients and staff feel safe, welcomed, important and included. To this end, we aspire to serve our mission in a way that is both trauma-informed and attentive to issues of equity, inclusion and diversity. In both areas, we have developed internal initiatives and supports, and we engage in outward-facing community activities. We realize that doing our best in these areas is a process rather than a destination and remain open to ways that we can continually improve.”



“Although Adapt has grown over the years, we are still small at heart and committed to continually improving our services and serving our community.”

COMPREHENSIVE & INTEGRATED CARE

Affordable, Accessible & High Quality Care for All

Primary Care

- Preventive Care
- Acute Care
- Family Planning
- Men’s & Women’s Health
- STD Tests & Treatment
- Chronic Disease Care
- Diabetes Care
- Immunizations
- Lab and X-ray (Winston Only by CHI Mercy)
- Referrals to Specialty Care

Children’s Health

- Well-Baby & Well-Child Exams
- Teen & Young Adult Health
- Sports Physicals

Behavioral Medicine Services

- Mental health counseling
- Substance Use Counseling
- Individual and Group Psychotherapy
- Medication for Opioid Use Disorder
- Pain Management
- Chronic Illness Management
- Tobacco Cessation

Psychiatric Medical Services

- Medication Management
- Individual Psychotherapy
- Pediatric Medication Management

Mental Health Care

- 24-Hr Crisis Response
- Mobile Crisis Co-Deployment with Law Enforcement
- IMPACTS

Adult Outpatient

- Individual and Group Counseling

Youth & Family Services

- Individual & Group Counseling (in-home and in-school)
- Intensive In-Home Behavioral Health
- Healthy Transitions
- Wraparound Program
- School-Based Mental Health

Community Support Services

- Assertive Community Treatment
- Case Management
- CHOICE Model
- Early Assessment and Support Alliance
- Forensic Mental Health Services
- IPS Supported Employment
- Peer Support Services

Substance Use Treatment

- Adult Outpatient & Intensive Outpatient Treatment
- Sub-Acute Medical Detox
- Residential Substance Abuse Treatment
- Sobering Center
- Opioid Treatment Program
- Corrections Treatment Services
- Drug Court Services
- Problem Gambling Treatment
- DUII Treatment Services
- Peer Support Services
- Aftercare and Support

Children & Family Treatment

- Youth Outpatient Treatment
- Youth Residential Treatment
- Family Treatment Services
- Moms in Recovery

Housing & Day Treatment

- Fresh Start Day Treatment
- Eveningside Transitional Housing
- Hillside Terrace Transitional Housing
- Hammond House Transitional Housing

Prevention & Education

- Substance Abuse Prevention
- Suicide Prevention
- Problem Gambling Prevention
- Child Sexual Abuse Prevention

“We all have a role to play in opening doors to health and recovery. Offering support to friends and family members living with physical or behavioral health conditions can help them get the care they need to live well.”

Patient-Centered Primary Care

Winston Clinic

671 SW Main Street
Winston, OR 97496
Phone: (541) 492-4550
Fax: (541) 492-4553

Roseburg Clinic

621 W Madrone Street
Roseburg, OR 97470
Phone: (541) 440-3500

Community Mental Health Care

Douglas County

Roseburg Office

621 W Madrone Street
Roseburg, OR 97470
Phone: (541) 440-3532
Fax: (541) 440-3554

Reedsport Office

680 Fir Street
Reedsport, OR 97467
Phone: (541) 440-3532

*Douglas County
24-Hour Crisis Line
(800) 866-9780*

Curry County

Brookings

306 Wharf Street
Brookings, OR 97415
(877) 408-8941

Gold Beach

29845 Airport Way
Gold Beach, OR 97444
(877) 408-8941

Port Orford

1403 Oregon Street
Port Orford, OR 97465
(877) 408-8941
(by appointment)

*Curry County
24-Hour Crisis Line
(877) 519-9322*

Substance Use Treatment

Roseburg Office

621 W Madrone Street
Roseburg, OR 97470
Phone: (541) 672-2691
Fax: (541) 673-5642

North Bend Office

400 Virginia Avenue., Suite 201
North Bend, OR 97459
Phone: (541) 751-0357

Grants Pass Office

356 NE Beacon Drive
Grants Pass, OR 97526
Phone: (541) 474-1033



adaptoregon.org